

IGLOO

POUCH



+2/+8°C



Up to 2h



<1 litre

POUCH IGLOO

VDW
Crucial Temperature Solutions



TECHNICAL SPECIFICATIONS

Product reference:	KITPIN2026V2P
Product components:	1 insulated pouch IGLOO v.2 1 flexible eutectic plate PES6x4000V2

DIMENSIONS

External (LxWxH) :	250 x 200 x 25 mm (± 5 mm) – 9.8 x 7.9 x 1.0 in
Payload (LxWxH) :	150 x 90 x 30 mm (± 5 mm) – 5.9 x 3.5 x 1.2 in

VOLUMES

External :	1.3 litres
Payload :	0.4 litres
Payload ratio :	31% of external volume

WEIGHT

Empty Mass :	25 g – 0.8 oz
Mass with gel packs :	277 g – 9.77 oz

PERFORMANCE

Pre- Qualification	Profile	Type	Product tested	Nb of probes	Duration
SPECIFIC	Cold	Constant at 0°C	Syringe	1	1 h 59 min
SPECIFIC	Ambient	Constant at +20°C	Syringe	1	21 min

IGLOO
POUCH



+2/+8°C



Up to 2h



<1 litre

METROLOGY REPORT:

SPECIFIC COLD PROFIL Constant temperature at 0°C

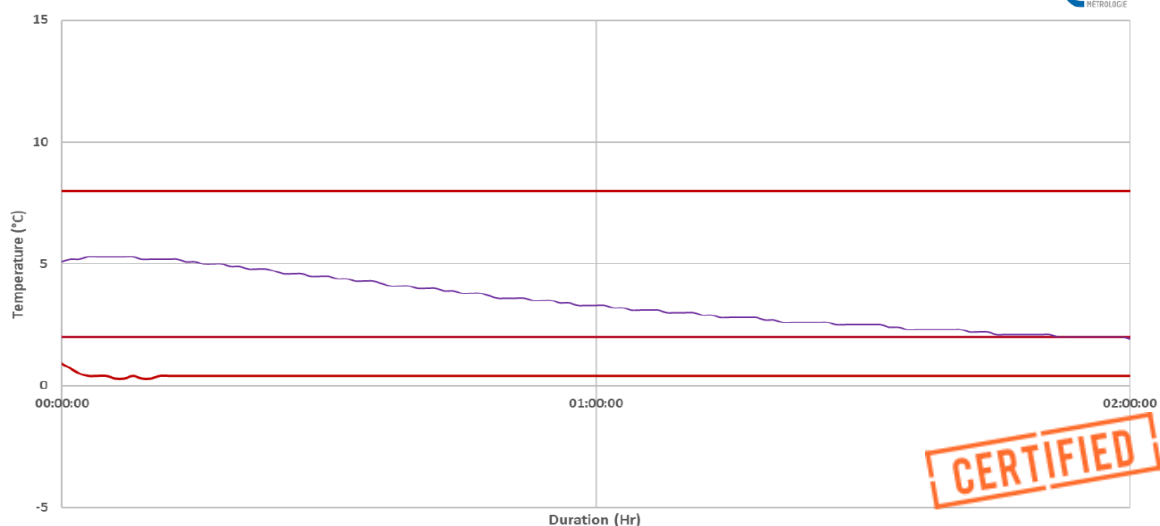
Profile - Specific Room temperature 0°C (Average Temperature : 0°C)

Temperature (° C)	0
Duration (hrs)	2

Objective: This test checks the performance of the **Igloo pouch**, under the specific profile.
This profile has been chosen to represent transit in cold and stable environment.

TEST 21-218 / Specific – constant at 0°C

ater
MÉTROLOGIE



— 21-218 T° ambiante — Alarme haute — Alarme basse — 21-218 Milieu

www.atermetrologie.com



The Ater Métrologie® laboratory certifies that the Igloo pouch keeps products between +2/+8 °C for 1 h 59 minutes, under the specific profile at 0 °C.

IGLOO
POUCH



+2/+8°C



Up to 2h



<1 litre

METROLOGY REPORT:

SPECIFIC AMBIENT PROFIL Constant temperature at +20°C



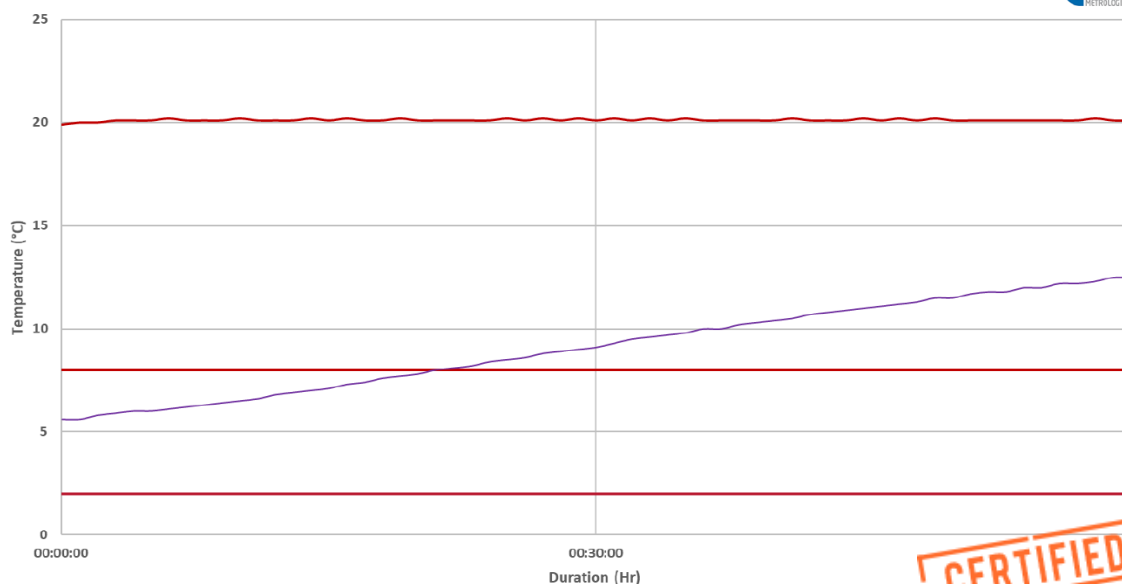
Profile - Specific Room temperature +20°C (Average Temperature : +20°C)

Temperature (° C)	20
Duration (hrs)	2

Objective: This test checks the performance of the **Igloo pouch**, under the specific profile.
This profile has been chosen to represent transit in stable environment at ambient temperature.

TEST 21-209 / Specific – constant at +20° C

ater
MÉTROLOGIE



— 21-209 T°Ambiante

— Alarme haute

— Alarme basse

— 21-209 Milieu

www.atermetrologie.com



The Ater Métrologie® laboratory certifies that the Igloo pouch keeps products between +2/+8 °C for 21 minutes, under the specific profile at +20°C.

IGLOO
POUCH



+2/+8 °C



Up to 2h



<1 litre

PACKOUT INSTRUCTION - SPECIFIC PROFILES AT 0 AND +20 °C



PES6X4000V2



1/ Place the flexible eutectic plate PES6X4000V2 inside the IGLOO pouch

2/ Place the open pouch in a refrigerator at least 12 hours at +5°C



3/ Place the product in the center and wrap the eutectic plate around it



4/ Insert the plate wrapped around the product inside the Igloo pouch. Close the pouch.

CLEANING

For cleaning, we recommend using a disinfectant. However, it is possible to wash the pouch by hand, using a warm water soap solution with a sponge (if necessary).

STORAGE

Store the pouch in a dry place after use.