

FROSTER LABO 530 PRO-ACTIVE

according to DIN 13277

Equipment

- Forced-air cooling
- 5 shelves
- Comfortable access
- Automatic defrosting
- Condensate evaporation
- Potential-free contact
- Digital temperature display
- Rapid freezing cycle
- Door frame heater
- Visual and audible alarm signal
- Minimum/maximum temperature memory

**MADE IN
GERMANY**



PRO-ACTIVE-Features

- Faster response time in the event of impending faults thanks to proactive alarms
- Data recording can be read out via USB interface using a USB stick and software
- Minimisation of temperature deviations in the interior
- Maximum storage safety thanks to harmonised components

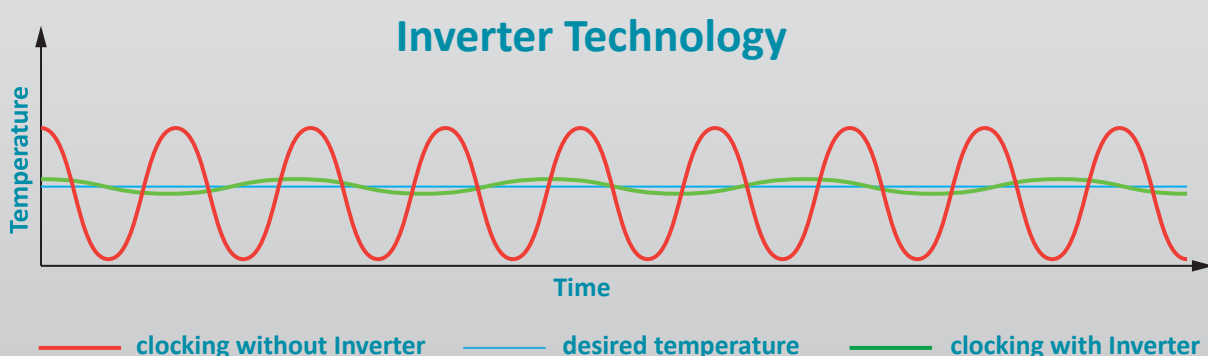


Compressor with inverter technology

- Environmentally friendly natural refrigerant R290.
Very low GWP value = 3 (Global Warming Potential)
- Reduction in power consumption by 43 % compared to the previous model (power consumption = 4.42 kWh/24h)
- Extended service life due to demand-orientated power adjustment
- Frequency: 50/60 Hz

If you need further support or have any questions,
please contact us.

info@kirsch-medical.de
+49 (0)781 - 9227 0



- **PRO-ACTIVE- Control:** Permanent, proactive monitoring of the performance data and alerts in the case of deviations. World's most accurate temperature control in refrigerated areas thanks to two standard PT-1000 sensors.
- **External housing** made from galvanised sheet steel (rust-proof), with white, anti-scratch powder coating. Length of the plug cable: approx. 2.8 m.
- **Equipped with castors.**
- **Interior made from** smooth aluminium with colourless protective coating. Gibs (every 15mm) for flexible interior arrangement.
- **Interior** can be customised (surcharge may apply). See optional equipment.
- **Extra-thick energy saving insulation**, made from high-quality, compression-moulded and environmentally friendly material.
- **Self-closing door** with easy-to-replace plastic magnetic seal frame, lockable.
- **Door hinge** on the right-hand side (by default, see illustration), or the left-hand side, can be retrofitted.
- **Forced-air cooling**, switches off automatically when you open the door, ensures a uniform temperature and minimizes temperature deviations.
- **Condensate evaporates** in stainless steel heated dish beneath the refrigerator floor.
- **Automatic fast defrosting** thanks to time-limited and temperature-monitored reversal of the refrigerant circuit.
- **Key switch** protected control panel against tampering. Membrane keyboard with digital temperature display and minimum/maximum temperature memory.
- **Power failure alarm** (visual and audible alarm), the monitoring unit remains in operation for approx. 30 hours on battery power.
- **Warning functions** with visual and audible alarm signal in the case of temperature deviations or other malfunctions. Door open alarm after 60 seconds.
- **Alarms** can be forwarded using a potential-free contact (e.g., to a mobile phone with optional KIRSCH EVOLUTION CLOUD or to a control centre).
- **Data documentation** readable via PC-KIT-NET or USB interface and software KIRSCH Datanet.
- **Rapid freezing cycle** ensures that the goods to be cooled are frozen quickly.
- **Ventilation-enforced refrigerating machine**, hermetically sealed, energy saving, low-noise, easy to service.
- **Door frame heater** prevents icing of the door.

Specification

Capacity	500 litres
Temperature setting	approx. -10 °C to -25 °C
Voltage	220 – 240 V, 50 and 60 Hz
Power consumption	213 watts
Normal consumption	4.3 kWh/24 h
Admissible ambient temperature	from +10 °C to +32 °C
Heat emission (max.)	417 watts
Exterior dimensions (including door handle and distance from wall)	w x d x h = 77 x 76 x 195.5 cm
Usable dimensions	w x d x h = 59 x 45 x 129 cm
Exterior dimensions with door open at 90°	w x d = 77 x 144 cm
Shelf size	w x d = 59 x 45 cm
Max. load shelf	40 kg
Weight (net/gross)	141 kg/164 kg
Temperature deviation without defrosting	+/-0.8 °C
Noise emission	53 dB(A)

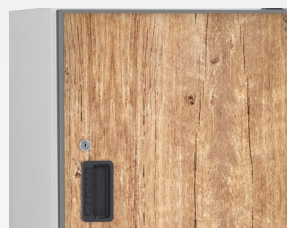
Optional equipment

KIRSCH refrigerators and freezers offer numerous equipment options that can be retrofitted.



Levelling feet

Levelling feet instead of castors.



Decorative frame

Made of stainless steel, allows to cover door with a decorative panel (thickness max. 2 mm).



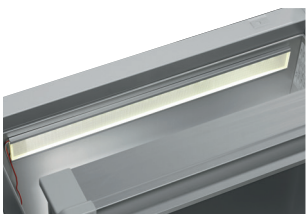
Plastic-drawer on roller runners

Up to 12 drawers are possible in total.



Additional length and cross dividers

for the optimum organisation of your refrigerated goods.



Interior lighting, side wall

Optional, optimised and energy-efficient illumination of the interior via LED light strip.



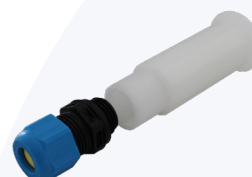
Additional Shelves

Wire shelves, robust with load capacity up to 40 and 50 kg.



Vario Support

Storage shelf on castors.



Access Port

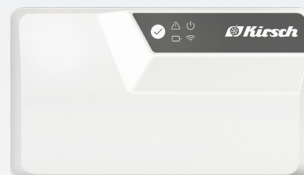
Simple insertion of an external temperature sensor with integrated cable feed-through.

Accessories for temperature documentation



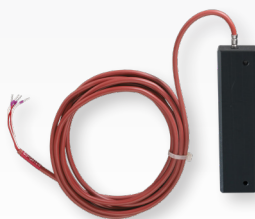
PC-KIT-NET

Automatic temperature documentation and monitoring via your network (LAN connection).



KIRSCH EVOLUTION CLOUD-Module

Maximum storage safety through optimal connectivity and real-time monitoring.



External PT100/PT1000 with cold block

Additional temperature sensor for connection to existing/external monitoring system.



Circular blade temperature recorder

Depending on the model, it is either installed in the machine compartment panel of the unit or integrated into an additional housing attachment.

* For more information about our cloud, please contact us.



Philipp Kirsch GmbH

Im Lössenfeld 14
77731 Willstätt
Germany

Phone: +49 (0) 781 9227-0
Telefax: +49 (0) 781 9227-200
info@kirsch-medical.com

www.kirsch-medical.com



Photograph this QR code
and learn
about our entire
product range.