

LABO 720 PRO-ACTIVE

according to DIN 13277

Equipment

- 5 shelves
- Forced-air cooling
- Automatic fast defrosting
- Comfortable access
- Key switch
- Condensate evaporation
- Potential-free contact
- Digital temperature display
- Antifreeze
- Equipped with castors
- Visual and audible alarm signal, even in the case of power failure
- Minimum/maximum temperature memory

**MADE IN
GERMANY**



PRO-ACTIVE-Features

- Faster response time in the event of impending faults thanks to proactive alarms
- Data recording can be read out via USB interface using a USB stick and software
- Minimisation of temperature deviations in the interior
- Maximum storage safety thanks to harmonised components

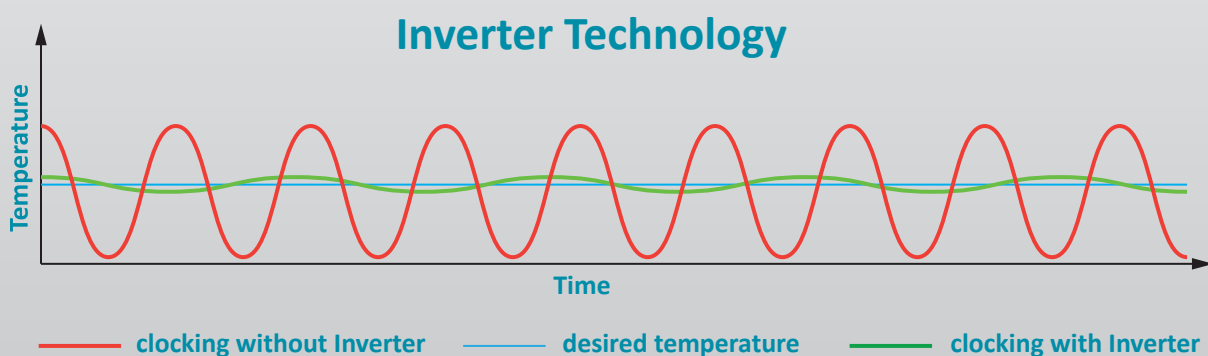


Compressor with inverter technology

- Environmentally friendly natural refrigerant R600a.
Very low GWP value = 3 (Global Warming Potential)
- Reduction in power consumption by 44 % compared to the previous model (power consumption = 0,82 kWh/24h)
- Extended service life due to demand-orientated power adjustment
- Frequency: 50/60 Hz
- Low noise operation

If you need further support or have any questions, please contact us.

info@kirsch-medical.de
+49 (0)781 - 9227 0



- **PRO-ACTIVE- Control:** Permanent, proactive monitoring of the performance data and alerts in the case of deviations. World's most accurate temperature control in refrigerated areas thanks to two standard PT-1000 sensors.
- **External housing** made from galvanised sheet steel (rust-proof), with white, anti-scratch powder coating. Length of the plug cable: approx. 2.8 m.
- **Equipped with castors.**
- **Interior made from** smooth aluminium with colourless protective coating. Gibs (every 15mm) for flexible interior arrangement.
- **Interior** can be customised (surcharge may apply). See optional equipment.
- **Extra-thick energy saving insulation**, made from high-quality, compression-moulded and environmentally friendly material.
- **Self-closing door** with easy-to-replace plastic magnetic seal frame, lockable.
- **Door hinge** on the right-hand side (by default, see illustration), or the left-hand side, can be retrofitted.
- **Forced-air cooling**, switches off automatically when you open the door, ensures a uniform temperature and minimizes temperature deviations.
- **Automatic fast defrosting** thanks to time-limited and temperature-monitored reversal of the refrigerant circuit.
- **Condensate evaporation** in the refrigeration machine room.
- **Key switch** protected control panel against tampering. Membrane keyboard with digital temperature display and minimum/maximum temperature memory.
- **Power failure alarm** (visual and audible alarm), the monitoring unit remains in operation for approx. 30 hours on battery power.
- **Warning functions** with visual and audible alarm signal in the case of temperature deviations or other malfunctions. Door open alarm after 60 seconds.
- **Alarms** can be forwarded using a Potential-free contact (e.g., to a mobile phone with optional KIRSCH EVOLUTION CLOUD or to a control centre).
- **Data documentation** can be read via USB interface with KIRSCH Datanet software.
- **Antifreeze** against sub-zero temperatures.
- **Ventilation-enforced refrigerating machine**, hermetically sealed, energy saving, low-noise, easy to service.
- **Low-noise compressor** reduces noise.

Specification

Capacity	700 litres
Temperature setting	approx. +0 °C to +15 °C
Voltage	220 – 240 V, 50 and 60 Hz
Power consumption	60 watts
Normal consumption	0.82 kWh/24 h
Admissible ambient temperature	from +10 °C to +38 °C
Heat emission (max.)	554 watts
Exterior dimensions (including door handle and distance from wall)	w x d x h = 77 x 98 x 195.5 cm
Usable dimensions	w x d x h = 59 x 65 x 129 cm
Exterior dimensions with door open at 90°	w x d = 77 x 165 cm
Shelf size	w x d = 59 x 65 cm
Max. load shelf	40 kg
Weight (net/gross)	141 kg/167 kg
Temperature deviation	+/-0.6 °C
Noise emission	46 dB(A)

Optional equipment

KIRSCH refrigerators and freezers offer numerous equipment options that can be retrofitted.



Glass door with lock

See clearly: avoid opening the door unnecessarily to inspect the contents.



Decorative frame

Made of stainless steel, allows to cover door with a decorative panel (thickness max. 2 mm).



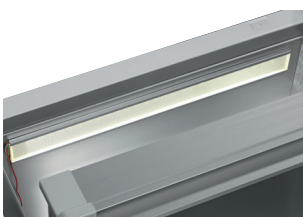
Plastic-drawer on roller runners

Up to 12 drawers are possible in total.



Additional length and cross dividers

for the optimum organisation of your refrigerated goods.



Interior lighting, side wall

Optional, optimised and energy-efficient illumination of the interior via LED light strip.



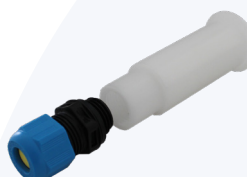
Additional Shelves

Wire shelves, robust with load capacity up to 40 and 50 kg.



Vario Support

Storage shelf on castors.



Access Port

Simple insertion of an external temperature sensor with integrated cable feed-through.



Door coupling

Connects the furniture door to the device.



Levelling feet

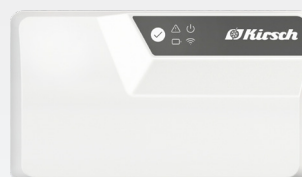
Levelling feet instead of castors.

Accessories for temperature documentation



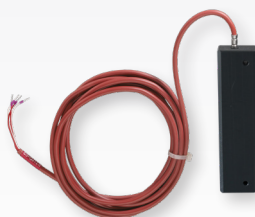
PC-KIT-NET

Automatic temperature documentation and monitoring via your network (LAN connection).



KIRSCH EVOLUTION CLOUD-Module

Maximum storage safety through optimal connectivity and real-time monitoring.



External PT100/PT1000 with cold block

Additional temperature sensor for connection to existing/external monitoring system.



Circular blade temperature recorder

Depending on the model, it is either installed in the machine compartment panel of the unit or integrated into an additional housing attachment.

* For more information about our cloud, please contact us.



Philipp Kirsch GmbH

Im Lossenfeld 14
77731 Willstätt
Germany

Phone: +49 (0) 781 9227-0
Telefax: +49 (0) 781 9227-200
info@kirsch-medical.com

www.kirsch-medical.com



Photograph this QR code
and learn
about our entire
product range.