

FROSTER MED 95 PRO-ACTIVE

Equipment

- Key switch
- Rapid freezing cycle
- 1 drawer and 2 shelves
- Standalone or undercounter installation
- Condensation tray
- Digital temperature display
- Potential-free contact
- Low noise compressor
- Visual and audible alarm signal, even in the case of power failure
- Minimum/maximum temperature memory

**MADE IN
GERMANY**



PRO-ACTIVE-Features

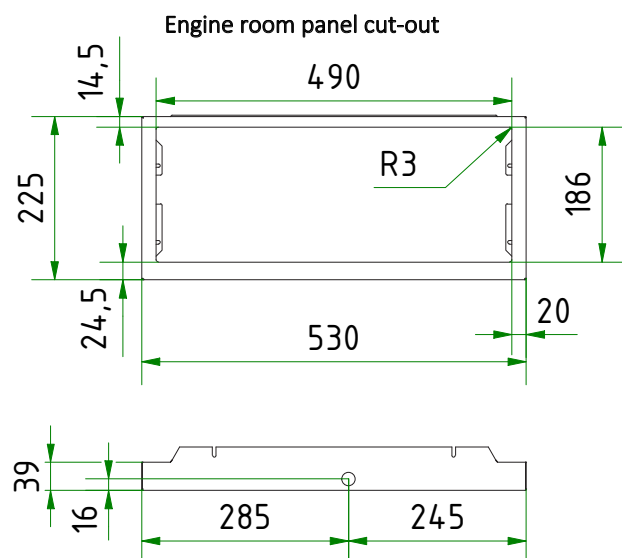
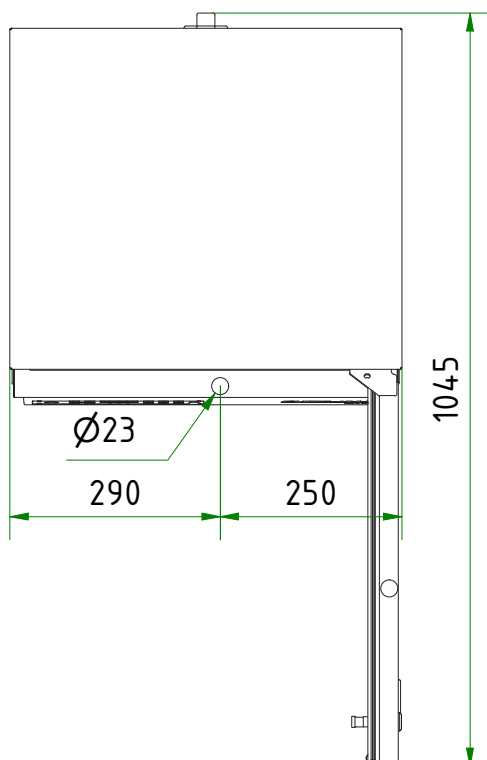
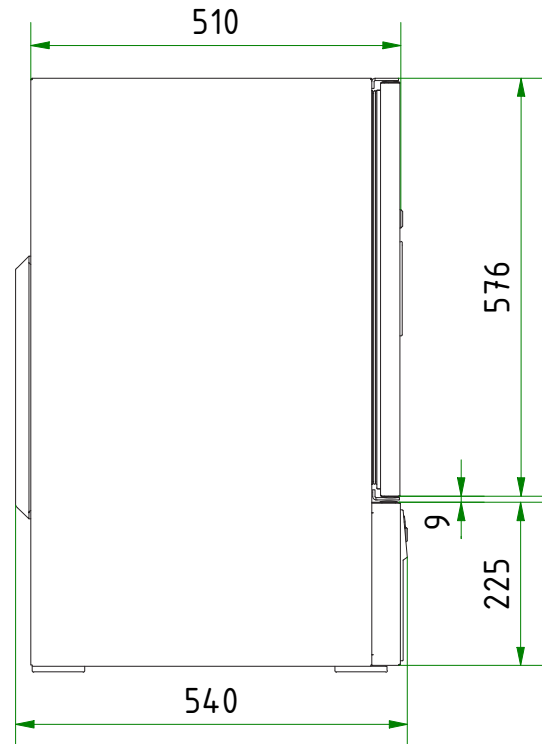
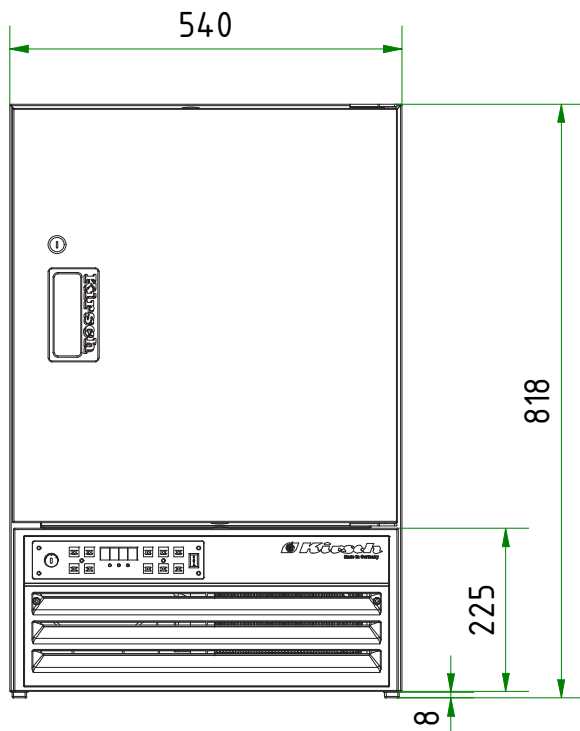
- Faster response time in the event of impending faults thanks to proactive alarms
- Data recording can be read out via USB interface using a USB stick and software
- Minimisation of temperature deviations in the interior
- Maximum storage safety thanks to harmonised components



- **PRO-ACTIVE-Control:** Permanent, proactive monitoring of the performance data and alerts in the case of deviations – so that you can take countermeasures in good time before a fault threatens your chilled goods; world's most accurate temperature control in refrigerated areas thanks to two standard PT-1000 sensors.
- **External housing** made from galvanised sheet steel (rustproof), with white, anti-scratch powder coating. Length of the plug cable: approx. 2.8 m.
- **Adjustable feet** positioned at the front to compensate uneven floors.
- **Interior made from** impact-resistant, white plastic with moulded-in shelves.
- **Interior** can be customised (surcharge may apply). See optional equipment.
- **Extra-thick insulation**, made from high-quality, compression-moulded and environmentally friendly material. Energy saving.
- **Door** with easy-to-replace plastic magnetic seal frame, lockable.
- **Door hinge** on the right-hand side (by default, see illustration), or the left-hand side, can be retrofitted.
- **Manual defrosting.** Removable condensation tray.
- **Key switch** protected control panel against tampering. Membrane keyboard with digital temperature display and minimum/maximum temperature memory.
- **Warning functions** with visual and audible alarm signal in the case of temperature deviations and power failure.
- **Alarms** can be forwarded via email or SMS using the Kirsch EVOLUTION CLOUD Module (optional).
- **Data documentation** can be read via USB interface with KIRSCH Datanet software.
- **Rapid freezing cycle** ensures that the goods to be cooled are frozen quickly.
- **Ventilation-enforced refrigerating machine**, hermetically sealed, energy saving, low noise, easy to service. Inlet air and exhaust air flow through the ventilation slits at the front.
- **Low-noise compressor** reduces noise.

Specification

Capacity	95 litres
Temperature setting	approx. -5 °C to -25 °C
Voltage	220 – 240 V, 50 Hz
Power consumption	123 watts
Normal consumption	1.33 kWh/24 h
Admissible ambient temperature	from +10 °C to +32 °C
Heat emission (max.)	162 watts
Exterior dimensions (including distance from wall)	w x d x h = 54 x 54 x 82 cm
Useable dimensions	w x d x h = 43 x 36 x 34 cm
Exterior dimensions with door open at 90°	w x d = 54 x 105.5 cm
Shelf size	43 x 36 cm
Drawer inner dimensions	w x d x h = 40.8 x 32 x 5.6 cm
Max. load drawer/shelf	13 kg/25 kg
Weight	Net weight 50 kg, gross weight 59 kg
Temperature deviation	+/-0.8 °C
Noise emission	38 dB(A)



Optional equipment

KIRSCH refrigerators and freezers offer numerous equipment options that can be retrofitted.



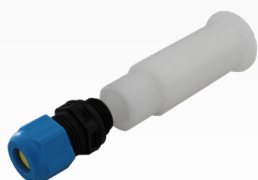
Additional length and cross dividers

for the optimum organisation of your refrigerated goods.



Drawers on runners

Up to three drawers are possible in total.



Access Port

Simple insertion of an external temperature sensor with integrated cable feed-through.



Additional Shelves

Wire shelves, robust with load capacity up to 40 and 50 kg.



Door coupling

Connects the furniture door to the device.



Decorative frame

Made of stainless steel, allows to cover door with a decorative panel (thickness max. 2 mm).



Condensation tray

for manual disposal of condensation water.



Castors

Can be equipped with steering and fixed castors.

Zubehör für die Temperaturdokumentation



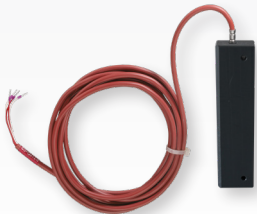
PC-KIT-NET

Automatic temperature documentation and monitoring via your network (LAN connection).



KIRSCH EVOLUTION CLOUD-Module

Maximum storage safety through optimal connectivity and real-time monitoring. *



External PT100/PT1000 with cold block

Additional temperature sensor for connection to existing/external monitoring system.

* For more information about our cloud, please contact us.

Philipp Kirsch GmbH

Im Lossenfeld 14
77731 Willstätt

Telefon: +49 (0) 781 9227-0
Telefax: +49 (0) 781 9227-200
info@kirsch-medical.de

www.kirsch-medical.com



You can find our complete product overview on our website:
www.kirsch-medical.com