

# MED 288 PRO-ACTIVE

according to DIN 13277

## Equipment

- Key switch
- Forced-air cooling
- 5 drawers
- Automatic defrosting
- Condensate evaporation
- Potential-free contact
- Digital temperature display
- Antifreeze
- Visual and audible alarm signal, even in the case of power failure
- Minimum/maximum temperature memory

**MADE IN  
GERMANY**



## PRO-ACTIVE-Features

- Faster response time in the event of impending faults thanks to proactive alarms
- Data recording can be read out via USB interface using a USB stick and software
- Minimisation of temperature deviations in the interior
- Maximum storage safety thanks to harmonised components

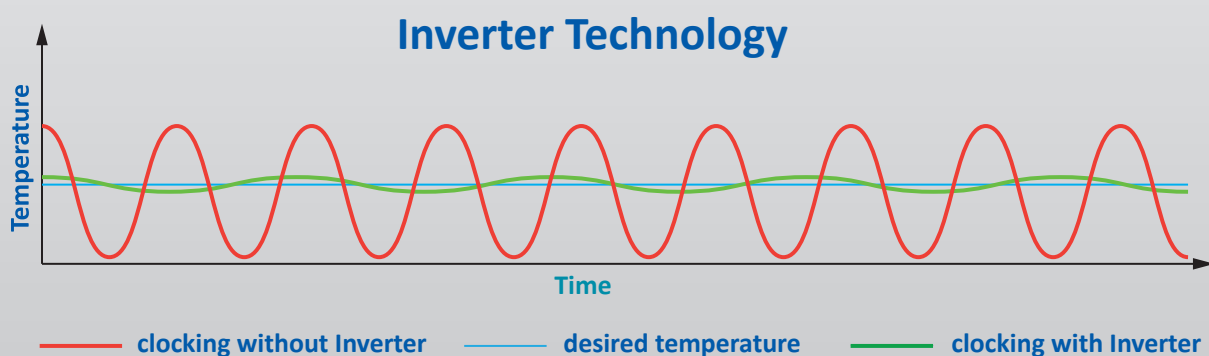


## Compressor with inverter technology

- Environmentally friendly natural refrigerant R600a.  
Very low GWP value = 3 (Global Warming Potential)
- Reduction in power consumption by 14.5 % compared to the previous model (power consumption = 0.59 kWh/24h)
- Extended service life due to demand-orientated power adjustment
- Frequency: 50/60 Hz

If you need further support or have any questions,  
please contact us.

**[info@kirsch-medical.de](mailto:info@kirsch-medical.de)**  
**+49 (0)781 - 9227 0**



- **PRO-ACTIVE-Control:** Permanent, proactive monitoring of the performance data and alerts in the case of deviations; world's most accurate temperature control in refrigerated areas thanks to two standard PT-1000 sensors
- **External housing** made from galvanised sheet steel (rustproof), with white, anti-scratch powder coating. Length of the plug cable: approx. 2.8 m.
- **Adjustable feet** positioned at the front to compensate uneven floors.
- **Interior made from** smooth aluminium with colourless protective coating. Gibs (every 15 mm) for flexible interior arrangement.
- **Interior** can be customised (surcharge may apply). See optional equipment.
- **Extra-thick insulation**, made from high-quality, compression-moulded and environmentally friendly material. Energy saving.
- **Door** with easy-to-replace plastic magnetic seal frame, lockable.
- **Door hinge** on the right-hand side (by default, see illustration), or the left-hand side, can be retrofitted.
- **Forced-air cooling**, switches off automatically when you open the door, ensures a uniform temperature and minimizes temperature deviations.
- **Automatic defrosting** with time limit and temperature monitoring.
- **Condensate evaporation** in the refrigerating machine interior.
- **Key switch** protected control panel against tampering. Membrane keyboard with digital temperature display and minimum/maximum temperature memory.
- **Alarmierung und Datenaufzeichnung** auch bei Stromausfall (optisch und akustisch), die Überwachungseinheit bleibt für ca. 30 Stunden durch einen Akku in Betrieb.
- **Warnfunktionen** mit optischem und akustischem Alarmsignal bei Fehlfunktion und Stromausfall. Türöffnungsalarm nach 60 Sekunden.
- **Alarms** can be forwarded via email or SMS using the Kirsch EVOLUTION CLOUD Module (optional).
- **Data documentation** can be read via USB interface with KIRSCH Datanet software
- **Antifreeze** against sub-zero temperatures
- **Statically ventilated refrigerating machine**, hermetically sealed, energy saving, low noise, easy to service.

## Specification

Capacity	280 litres
Temperature setting	approx. +2 °C to +15 °C
Voltage	220 – 240 V, 50 and 60 Hz
Power consumption	38.7 watts
Normal consumption	0.59 kWh/24 h
Admissible ambient temperature	from +10 °C to +38 °C
Heat emission (max.)	144 watts
Exterior dimensions (including door handle and distance from wall)	w x d x h = 67 x 72 x 132 cm
Usable dimensions	w x d x h = 50.4 x 32 x 92 cm (Usable depth below 15 cm less)
Exterior dimensions with door open at 90°	w x d = 67 x 130 cm
Drawer innerm dimensions	w x d x h = 50.4 x 32 x 5.6 cm
Max. load: drawer/shelf	16 kg
Weight (net/gross)	75 kg/87 kg
Temperature deviation	+/-0.8 °C
Noise emission	40.8 dB(A)



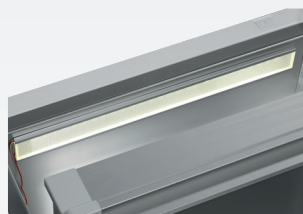
## Optional equipment

KIRSCH refrigerators and freezers offer numerous equipment options that can be retrofitted.



### Glass door with lock

Transparency: avoid opening the door unnecessarily to inspect the contents. Lockable.



### Interior lighting on ceiling

Optional, optimal and energy-efficient lighting for the interior using an LED lightstrip.



### Additional length and cross dividers

for the optimum organisation of your refrigerated goods.



### Drawers on runners

Up to eight drawers are possible in total.



### Lockable drawer (top)

Protects special refrigerated goods from unauthorised access.



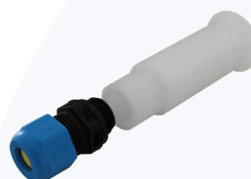
### Additional Shelves

Wire shelves, robust with load capacity up to 40 and 50 kg.



### Vario Support

Storage shelf on roller runners.



### Access Port

Simple insertion of an external temperature sensor with integrated cable feed-through.



### Door coupling

Connects the furniture door to the device.



### Castors

Can be equipped with steering and fixed castors.



**Condensation tray**

for manual disposal of condensation water.



**Decorative frame**

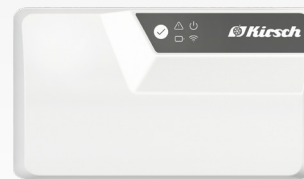
Made of stainless steel, allows to cover door with a decorative panel (thickness max. 2 mm).

**Equipment for temperature documentation**



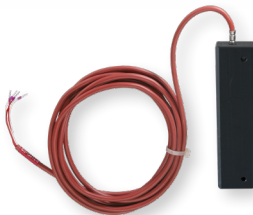
**PC-KIT-NET**

Automatic temperature documentation and monitoring via your network (LAN connection).



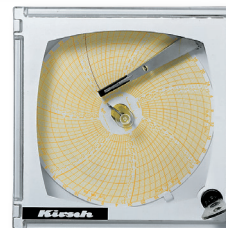
**KIRSCH EVOLUTION CLOUD-Module**

Maximum storage safety through optimal connectivity and real-time monitoring. \*



**External PT100/PT1000 with cold block**

Additional temperature sensor for connection to existing/external monitoring system.



**Circular blade temperature recorder**

Depending on the model, it is either installed in the machine compartment panel of the unit or integrated into an additional housing attachment.

\* For more information about our cloud, please contact us.

**Philipp Kirsch GmbH**

Im Lossenfeld 14  
77731 Willstätt

Telefon: +49 (0) 781 9227-0  
Telefax: +49 (0) 781 9227-200  
info@kirsch-medical.de

[www.kirsch-medical.com](http://www.kirsch-medical.com)



You can find our complete product overview on our website:  
[www.kirsch-medical.com](http://www.kirsch-medical.com)